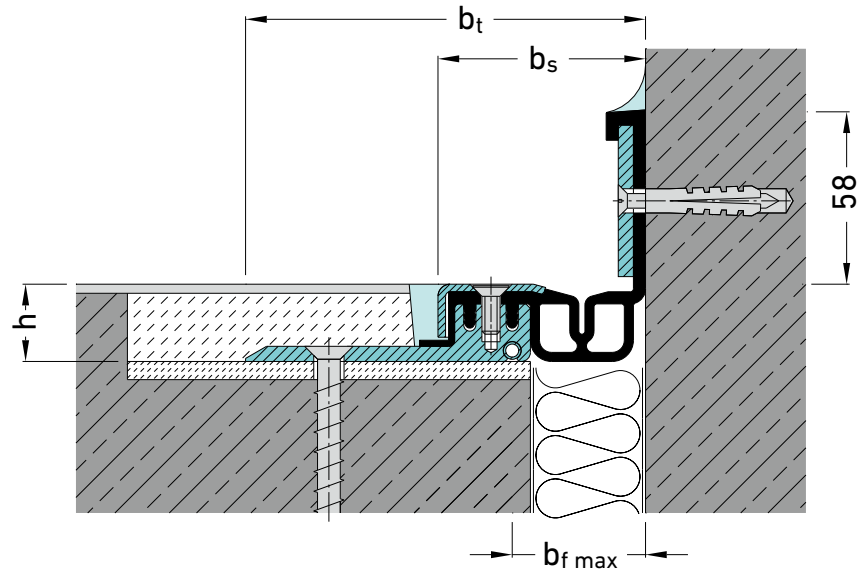


## SUPPORTS WALL CONNECTIONS WITH SHORT AAS SHEETS FOR FLOORING AREAS WITH COATINGS

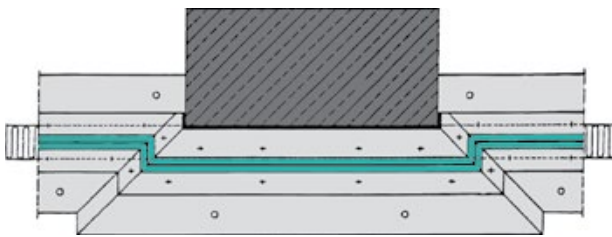
### E 4 version

in conjunction with the expansion joint covers:

- FP(G) 80 NI
- FP(G) 90 NI
- FP(G) 110 NI
- FP 130 NI
- FP 155 NI



FP 90/25 NI E 4



Column skirt wall connection version E 2 or E 3

### Important when using versions E2 and E3:

If the joint is located immediately next to a column or wall, at the beginning and end, two flat brackets are required as intersections (see drawing). This ensures that the expansion joint cover in the floor-floor section is located centrally over the joint. The intersections may be left out if the joint is located in the column-wall vicinity **approximately 40 mm from the column/wall**. In this case, a floor-wall connection of the AAS sheet is only required at each corner.

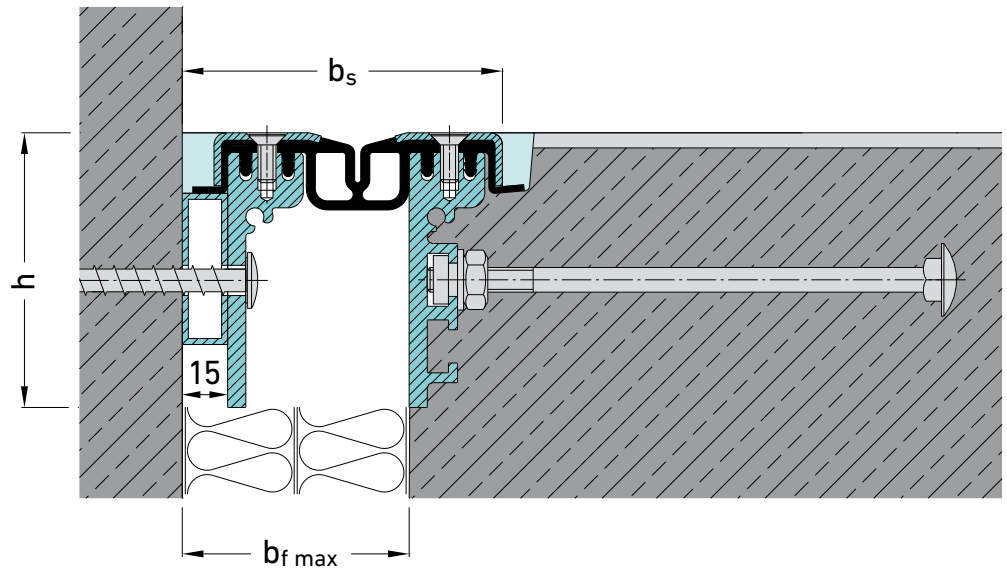
Version	E 2		E 3		E 4		E 5	
Expansion joint cover	b <sub>s</sub>	b <sub>t</sub>	b <sub>s</sub>	b <sub>t</sub>	b <sub>s</sub>	b <sub>t</sub>	b <sub>s</sub>	b <sub>t</sub>
FP(G) 80 NI	96	159	93	156	56	119	55	118
FP(G) 90 NI	109	172	106	169	69	132	68	131
FP(G) 110 NI	125	188	122	185	85	148	84	147
FP 130 NI	149	212	146	209	107	170	106	169
FP 155 NI	169	232	166	229	129	192	128	191
FP(G) 80/90 B NI	-	-	92	-	56	-	-	-
FP(G) 90/90 B NI	-	-	105	-	69	-	-	-
FP(G) 110/90 B NI	-	-	121	-	85	-	-	-
FP 130 B NI	-	-	143	-	107	-	-	-
FP 155 B NI	-	-	165	-	129	-	-	-
FPL 85/27 NI	-	-	-	-	69	-	-	-
FPL 85/75 B NI	-	-	-	-	69	-	-	-

## SUPPORTS WALL CONNECTIONS WITH SHORT AAS SHEETS FOR FLOORING AREAS WITH COATINGS

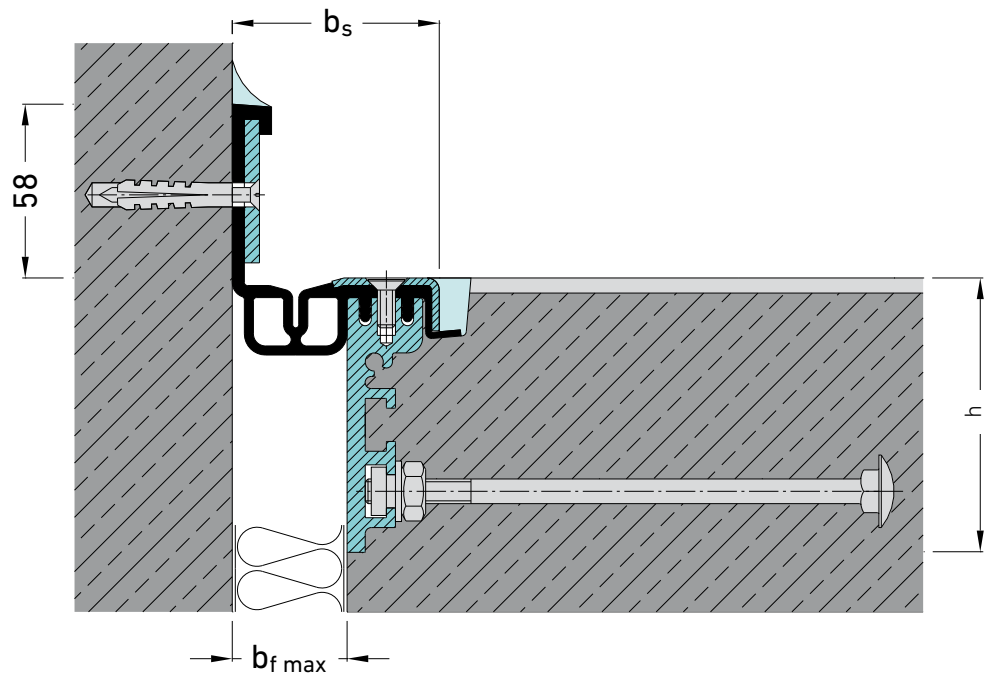
### E 3 and E 4 versions

in conjunction with the expansion  
joint covers:

- FP(G) 80/90 B NI
- FP(G) 90/90 B NI
- FP(G) 110/90 B NI
- FP 130/90 B NI
- FP 155/90 B NI



FP 90/90 B NI **E3**



FP 90/90 B NI **E4**

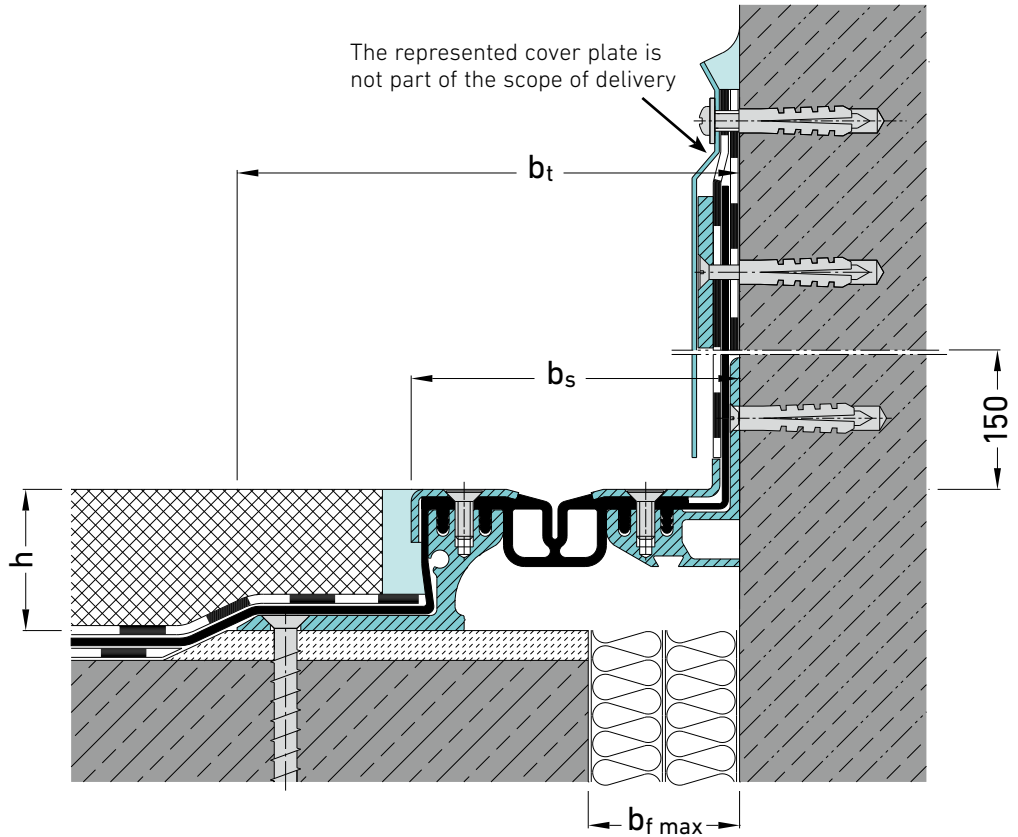
## SUPPORTS WALL CONNECTIONS

### WITH LONG AAS SHEETS FOR BITUMINOUS SEALS

#### E 2 version

for supports/wall connections in conjunction with the expansion joint covers:

- FP(G) 80 NI
- FP(G) 90 NI
- FP(G) 110 NI
- FP 130 NI
- FP 155 NI

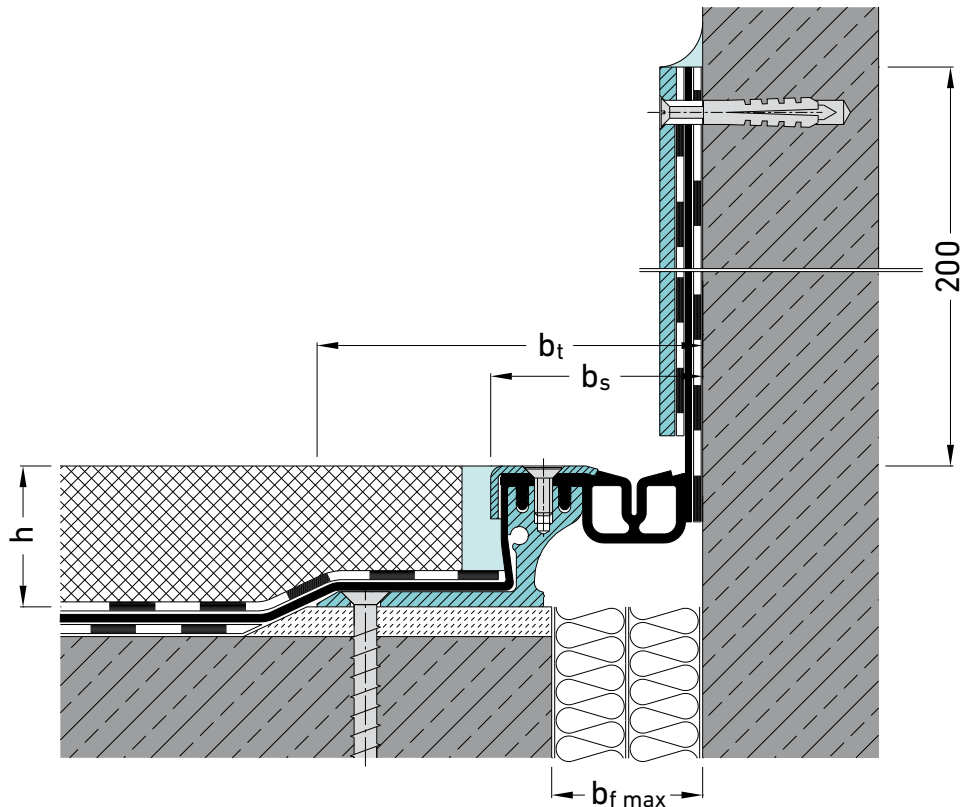


FP 90/45 NI E 2

#### E 5 version

for column connections in connection with the expansion joint covers:

- FP(G) 80 NI
- FP(G) 90 NI
- FP(G) 110 NI
- FP 130 NI
- FP 155 NI



FP 90/45 NI E 5